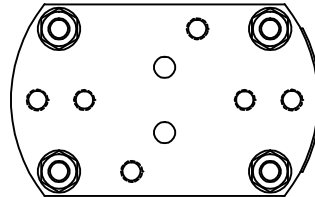
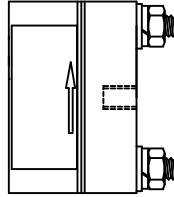
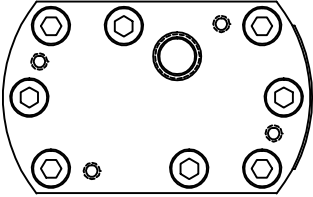
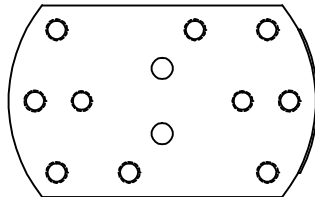
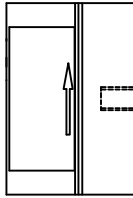
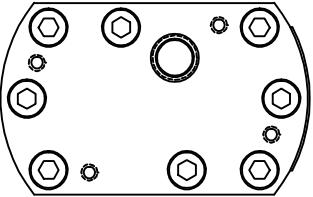


SLGF



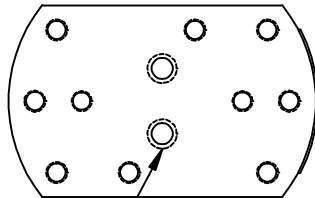
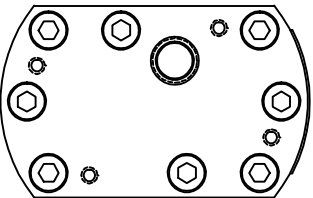
\* UNTHREADED CORNERS w/ LONG BOLTS  
\* NO PORT THREADS

SLGA



\* STANDARD CORNER BOLTS  
\* NO PORT THREADS

SLG



Threaded Port Holes

\* STANDARD CORNER BOLTS  
\* PORT THREADS

**AW-LAKE COMPANY USE ONLY**

THIS PRINT, INCLUDING THE INFORMATION CONTAINED IN IT, IS THE PROPERTY OF AW-LAKE COMPANY. IT IS CONSIDERED PROPRIETARY IN NATURE AND MAY NOT BE USED OR DISCLOSED OUTSIDE OF AW-LAKE COMPANY, EXCEPT UNDER PRIOR WRITTEN AGREEMENT. ANY MODIFICATIONS MADE TO OR COMMENTS WRITTEN ON THIS DRAWING BY UNAUTHORIZED PERSONNEL WILL VOID THIS DRAWING.



2440 W. Corporate Preserve Dr. #600  
Oak Creek, WI 53154  
Phone: 414.574.4300  
Fax: 414.574.4301

TITLE: HPM-SLG METERS

DRAWING NUMBER: HPMS723B

PART NUMBER: —

DATE: 02-19-98

REV: B

DRAWN BY:

SHANE WILSON

CHECKED BY: C.H.

PAGE 1

OF 1

SCALE: NONE