

# HM-AC High Pressure Turbine Flow Meter

## Common Uses

The HM-AC series of turbine flow meters is ideal when measuring the flow of fluids under high pressure, (up to 20,000 psi) and is available in a variety of flow ranges (0.08 to 32 gallons/minute). These meters come standard with AutoClave® process connections, but are also available in Grayloc® and Techlok®. A complete line of hazardous area approved sensors and displays are available as well.

Applications include:

- Dosing, filling & 2-component mixing systems
- Process monitoring
- Water & DI water
- Inhibitors
- Emulsions
- Fuels, gasoline, kerosene, methanol



## Technical Specifications

General Meter Data	
9 Flow Ranges	0.08 up to 32 gpm (across all meter sizes)
Measuring Accuracy	±0.1% (under laboratory conditions, including linearization; viscosity ≥ 1 mm <sup>3</sup> /s)
Repeatability	±0.05% (under the same conditions)
Max. Operating Pressure	Up to 20,000 psi
Fluid Temperature	-40° to 302°F (-40° to 150°C)
Viscosity Range	1 to 30 mm <sup>2</sup> /s

## Meter Materials of Construction

Body	Stainless Steel as per DIN 1.3980
Rotor Support	316 Ti Stainless Steel
Rotor	329 Stainless Steel as per DIN 1.4460
Bearings/Shaft	Tungsten carbide sleeve bearing



# HM-AC High Pressure Turbine Flow Meter

## Meter Data - Sizes

Part Number	Range (gal/min)	Medium Pressure AutoClave	K-Factor (Pulses/ gal)	Max. Frequency (0-max. Hz)	Pressure Rating (psi)	Weight (lbs)
HM 003/AC	0.08 to 0.4	9/16"	123,000	1,100	20,000*	4.2
HM 004/AC	0.13 to 1.05	9/16"	94,600	1,700	20,000*	4.4
HM 005/AC	0.2 to 1.6	3/4"	67,400	1,750	20,000*	4.8
HM 006/AC	0.3 to 2.6	3/4"	45,400	2,100	20,000*	4.8
HM 007/AC	0.5 to 5	1"	19,000	1,650	20,000*	5.1
HM 009/AC	0.9 to 9	1"	19,000	2,750	20,000*	5.3
HM 011/AC	1.6 to 16	1"	5,000	1,350	20,000*	5.3
HM 013/AC	2.25 to 22.5	1-1/2"	3,500	1,300	15,000	12.1
HM 017/AC	3.2 to 32	1-1/2"	1,440	840	15,000	12.1

\*Pressure rating drops to 15,000 psi if used with RT-30EX or HUB-40EX sensors.

## Sensor Recommendations

Model	Sensor Type	Temp (°F)
<b>EX Meters</b>		
RT-30EX	Hazardous area rated local flow rate transmitter	-4 to 140
HUB-40EX	Hazardous area rated sensor	-4 to 140
ECO	Intrinsically safe sensor	-40 to 140
<b>Non EX Meters</b>		
RT-30SD	Local flow rate transmitter	-4 to 140
EDGE	Frequency, analog, and Modbus	-40 to 185

\*For additional sensors such as extended temperature range, contact factory.

## Meter Dimensions

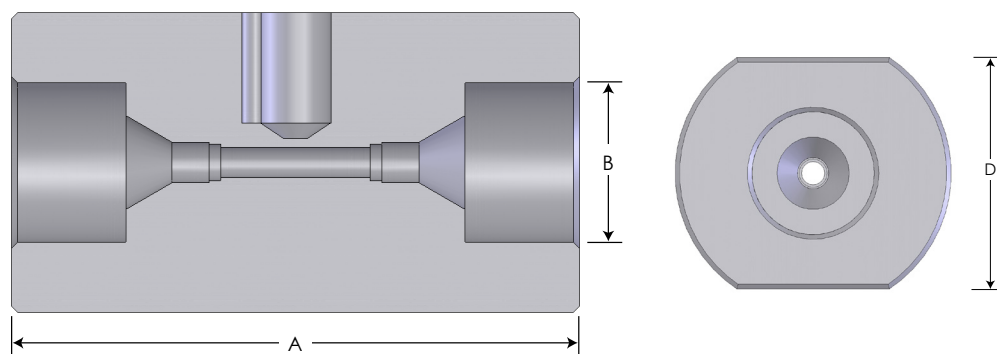
Part Number	A	B	D
HM 003/AC	3.54"	13/16"	1.97"
HM 004/AC	3.54"	13/16"	1.97"
HM 005/AC	4.13"	3/4"	1.97"
HM 006/AC	4.13"	3/4"	1.97"
HM 007/AC	5.31"	1-3/8"	1.97"
HM 009/AC	5.31"	1-3/8"	1.97"
HM 011/AC	5.51"	1-3/8"	1.97"
HM 013/AC	6.89"	1-7/8"	2.76"
HM 017/AC	7.01"	1-7/8"	2.76"

## Ordering

Contact factory for Part Number Configuration

### End-of-Life Disposal:

At the end of its service life, this product and its associated electronics should **not be discarded with municipal solid waste**. We strongly recommend recycling the unit in accordance with **all applicable local, state, and federal regulations**. Electronic components may qualify as universal waste and should be handled through an appropriate recycling or collection program. Responsible recycling supports our commitment to environmental stewardship under ISO 14001.



Products may be subject to change without notice. Contact factory for the most up-to-date product information.