

TRG Standard Turbine Flow Meter

Common Uses

The sturdy construction of the TRG turbine flow meter means high performance and longer service life at an affordable price. This is the ideal flow meter for monitoring solvents and other lower viscosity fluids, such as antifreeze and fuels. These meters offer many benefits, including:

- **Rugged & Cost Effective:** The sturdy construction of this turbine mean high performance and long service life.
- **Industry Standard:** The TRG Series flow meter comes standard with NPT end connections for universal applications.
- **Simplified Maintenance:** This meter was designed with only one moving part for easy cleaning and maintenance.
- **Versatile:** This meter is capable of measuring flow in line sizes from 1/2" to 2".
- **Electronic Integration:** his meter can provide displayed flow rate, totalization, current or voltage outputs through a variety of compatible electronics.
- **Explosion Proof (EX) Options Available**



Technical Specifications

General Meter Data	
9 Flow Ranges	0.08 up to 200 gpm (across all meter sizes)
Measuring Accuracy	±1.0% of reading or better
Repeatability	±0.1% (under the same conditions)
Turn Down Ratio	10:1
Max. Operating Pressure	Up to 5,000 psi
Fluid Temperature	-150° to 450°F (-101° to 232°C)
Standard Calibration Media	Tap water @ 70°F
End Connections	NPT

Meter Materials of Construction

Body	316L Stainless Steel
Rotor Support	303 Stainless Steel
Rotor Shaft	Tungsten Carbide
Impeller	420 Stainless Steel

TRG Standard Turbine Flow Meter

Meter Data - Sizes

Part Number	Flow Range (gal/min)	K-Factor* (pulses/gal)	Porting	Filtration (micron)	Pressure Rating (psi)	Weight (lbs)
TRG-11.250-5 (EX2) ¹	0.08 to 0.4	125,000	1/2" Male NPT	100	5,000	0.75
TRG-11.300-5 (EX2) ¹	0.13 to 1.06	91,500	1/2" Male NPT	100	5,000	0.75
TRG-11.375-5 (EX2) ¹	0.3 to 3	48,000	1/2" Male NPT	100	5,000	0.75
TRG-11.500-5 (EX2) ¹	0.9 to 9	15,000	1/2" Male NPT	100	5,000	0.75
TRG-11.750-5 (EX2) ¹	1.6 to 16	10,500	1/2" Male NPT	300	5,000	0.75
TRG-11.750 (EX2) ¹	1.6 to 16	10,500	1" Male NPT	300	5,000	1.25
TRG-11.880** (EX2) ¹	3.2 to 32	2,900	1" Male NPT	300	5,000	1.50
TRG-1110 (EX2) ¹	5.3 to 53	800	1-1/2" Male NPT	300	5,000	2.50
TRG-1120L (EX2) ¹	13 to 200	400	2" Male NPT	300	5,000	3.25

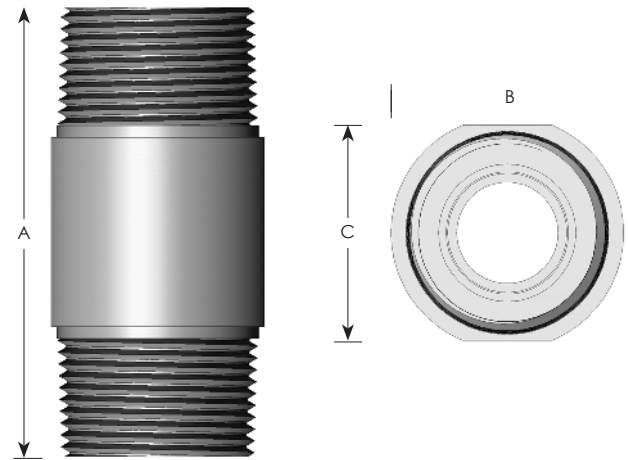
*K-Factors given are averaged. A calibration sheet accompanies every meter sold. **This is a direct replacement for the TRG-11.875 and has a doubled K-Factor.

¹EX2 versions available.

Meter Dimensions

Part Number	A	B	C
TRG-11.250-5 (EX2) ¹	3.00"	1.35"	1.20"
TRG-11.300-5 (EX2) ¹	3.00"	1.35"	1.20"
TRG-11.375-5 (EX2) ¹	3.00"	1.35"	1.20"
TRG-11.500-5 (EX2) ¹	3.00"	1.35"	1.20"
TRG-11.750-5 (EX2) ¹	3.00"	1.35"	1.20"
TRG-11.750 (EX2) ¹	3.00"	1.55"	1.40"
TRG-11.880 (EX2) ¹	3.00"	1.55"	1.40"
TRG-1110 (EX2) ¹	3.00"	2.15"	1.95"
TRG-1120L (EX2) ¹	4.00"	2.70"	2.55"

¹EX2 versions available.



Ordering

Contact factory for Part Number Configuration

End-of-Life Disposal:

At the end of its service life, this product and its associated electronics should **not be discarded with municipal solid waste**. We strongly recommend recycling the unit in accordance with **all applicable local, state, and federal regulations**. Electronic components may qualify as universal waste and should be handled through an appropriate recycling or collection program. Responsible recycling supports our commitment to environmental stewardship under **ISO 14001**.

Products may be subject to change without notice. Contact factory for the most up-to-date product information.