

CLEARVIEW VALUE FLOW METER

ClearView Flow Meter is an economical way to monitor water flows, observe case drain flows and verify pump outputs.



TECHNICAL SPECIFICATIONS

Measuring Accuracy
±2% of full scale

Repeatability
±1% of full scale

Flow Measuring Range
1-30 GPM (5-110 LPM)

Maximum Operating Pressure
325 PSIG (22.4 Bar)

Maximum Operating Temperature
ClearView H2O 200°F (93°C) (water only)
ClearView+ 250°F (121°C)

Standard Calibration Fluids
Oil monitors: DTE 25® @110°F (43°C),
0.873 sg
Water monitors: tap water @70°F (21°C),
1.0 sg

Filtration Requirements
74 micron filter or 200 mesh screen
minimum

MATERIALS OF CONSTRUCTION (WETTED COMPONENTS)

| | ClearView H2O | ClearView + |
|-----------|-----------------|-----------------|
| End Ports | Brass, Ryton® | Brass, Ryton® |
| Seals | Viton | Viton |
| Spring | Stainless Steel | Stainless Steel |
| Body | Polycarbonate | Polysulfone |
| Indicator | Polysulfone | Polysulfone |

Ryton is a registered trademark of the Chevron Phillips Chemical Company LLC. Buna-N is a registered trademark of Chemische Werke Huls. DTE is a registered trademark of Exxon Mobil.

BENEFITS

Visual Inspection of Fluid

The transparent body allows for visual inspection of fluid conditions. Diagnose problems at a glance.

Unrestricted Mounting

Allows for horizontal, vertical or inverted installation and does not require straight plumbing on inlet or outlet.

Compact Design

Measures less than 8" long and 2-7/16" diameter with a rigid tube and union nut design.

Multiple Materials and Calibrations Available

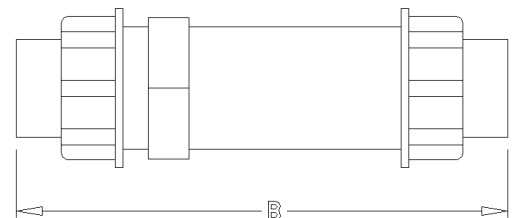
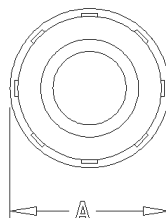
With a variety of wetted materials of construction and media calibrations, the meter will be well suited to your process.

Sensing Method Assures Accuracy

The proven variable area piston metering assembly provides accurate, dependable flow rate indication.

MECHANICAL - SIZE CODE

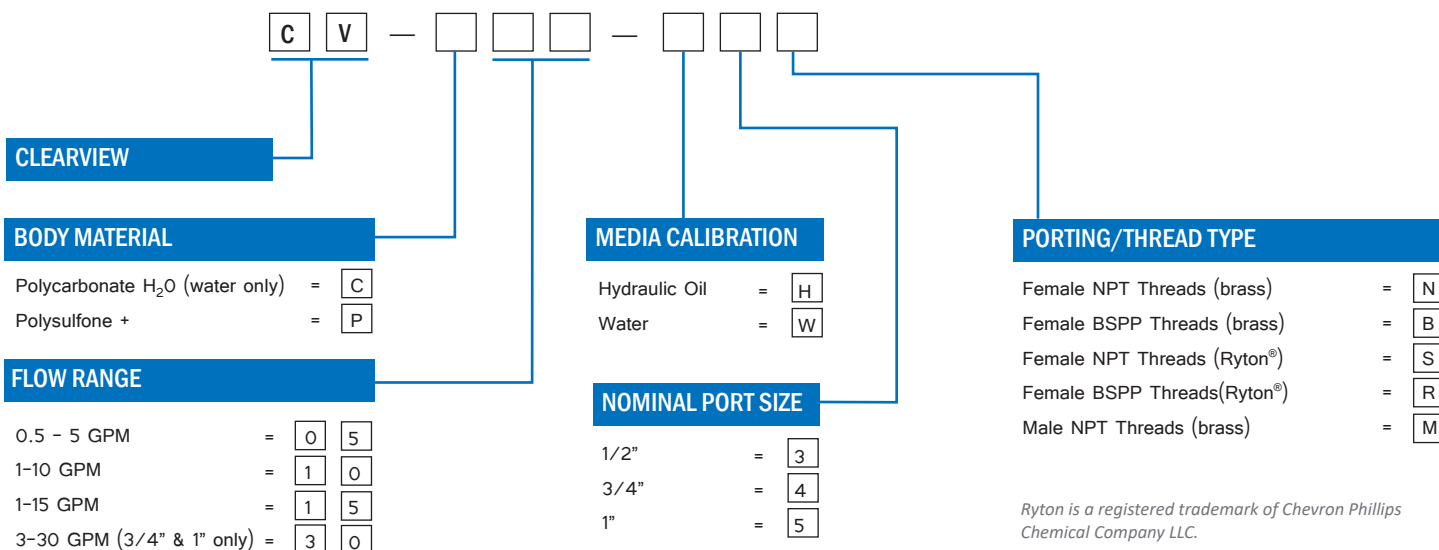
| DIM | 1/2" Female | 3/4" Female | 1" Female |
|-----------|-------------------|------------------|------------------|
| A | 2-7/16" (62 mm) | 2-7/16" (62 mm) | 2-7/16" (62 mm) |
| B - Brass | 7-5/32" (182 mm) | 7-9/16" (192 mm) | 7-9/16" (192 mm) |
| B - Ryton | 7-9/16" (192 mm) | 7-9/16" (192 mm) | 7-9/16" (192 mm) |
| Port Type | NPTF, BSPP | NPTF, BSPP | NPTF, BSPP |
| DIM | 1/2" Male | 3/4" Male | 1" Male |
| B - Brass | 7-21/32" (194 mm) | 8-1/64" (204 mm) | 8-3/16" (208 mm) |
| Port Type | NPTF | NPTF | NPTF |



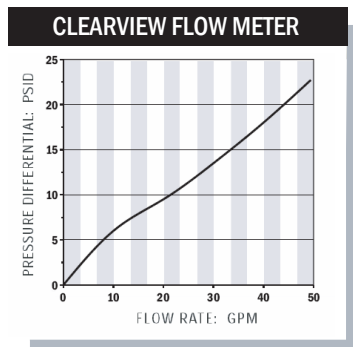
CLEARVIEW VALUE FLOW METER

ClearView Flow Meter is an economical way to monitor water flows, observe case drain flows and verify pump outputs.

PART NUMBER GUIDE



TYPICAL PRESSURE DIFFERENTIALS



Products may be subject to change without notice - Contact factory for the most up-to-date product information.