

CAPM-15 High Temperature Pickup System

Description:

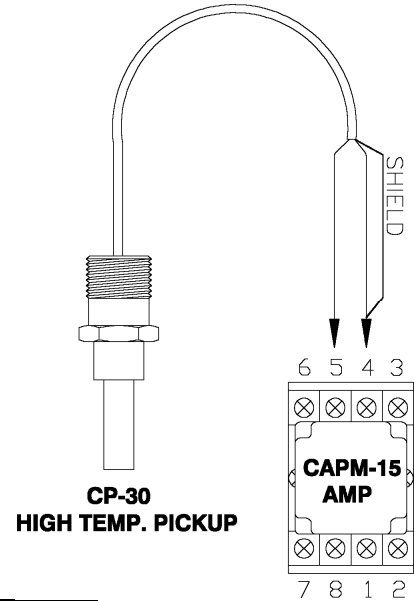
The **CAPM-15 High Temperature Pickup System** consists of a **CAPM-15/AMP** signal amplifier module and the **CP-30** high temperature carrier frequency pickup.

The **CAPM-15/AMP** will work on a supply voltage between 10 Volt DC and 30 Volt DC. The module is protected against reversed polarity on the voltage supply.

The length of wire between the **CP-30** and the **CAPM-15/AMP** module should not be extended over 20 feet. The **CP-30** is supplied with a 7 foot cable only.

Technical Data:

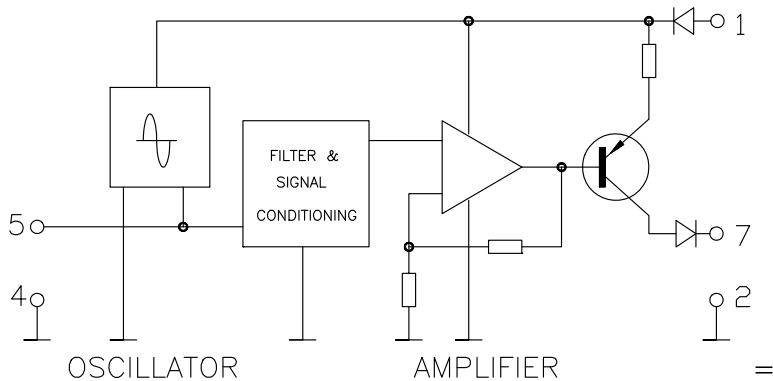
- Supply Voltage: 10 to 30 Volt DC
- Supply Current: 9 mA @ 15 Volt, max 18mA
- Signal Output: Square wave, Supply minus 2-3 V, peak-to-peak
- Frequency Output : Flow dependent, up to 2000 Hz
- Temperature range: **CAPM-15/AMP** : Up to 160°F/70°C
- CP-30**.....: Up to 400°F/205°C



Connections:

- 1 - +10 to 30 Volt DC supply voltage
- 2 - Ground for supply and signals
- 3 - Not used
- 4 - Signal from pickup & shield wire
- 5 - Signal from pickup
- 6 - Not used
- 7 - Frequency signal output
- 8 - Not used

<u>Wire Color Code:</u>	
Supply Voltage:	Red
Ground:	Black
Signal:	White



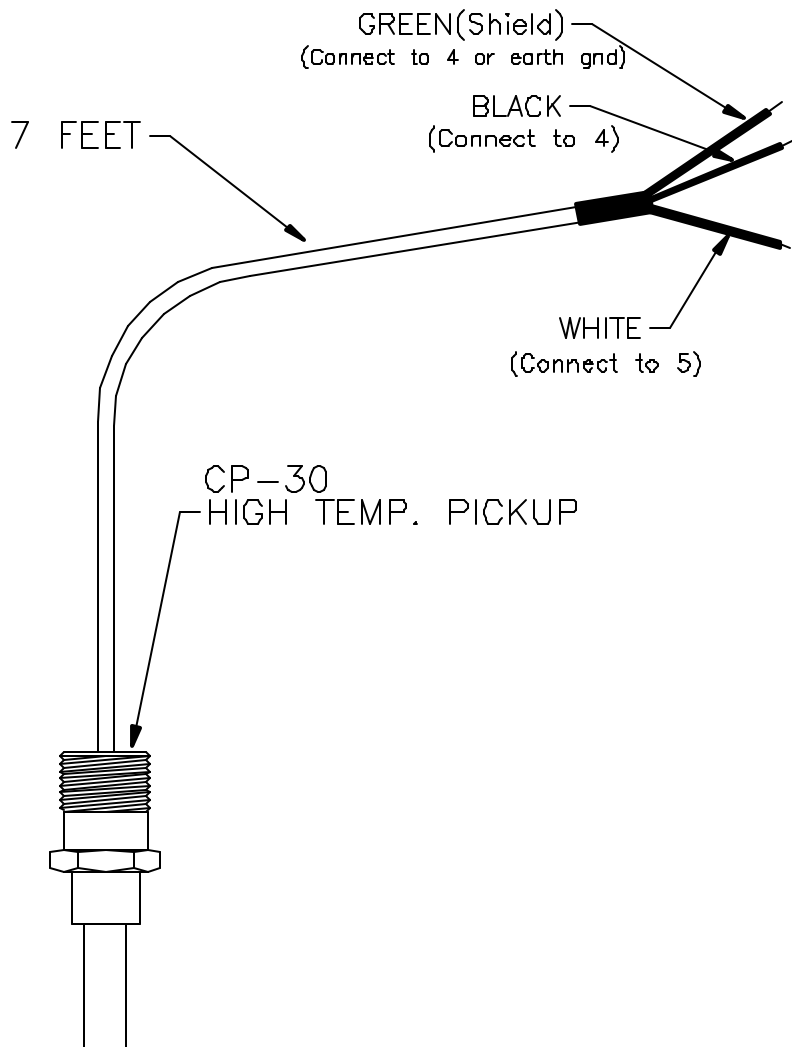
OUTPUT:
13V. peak-peak
(4.2VRMS) @ 15V SUPPLY

Note: If signal does not go to ground, connect external resistor, 5 K-10 Kohm, between input and ground of monitoring equipment.

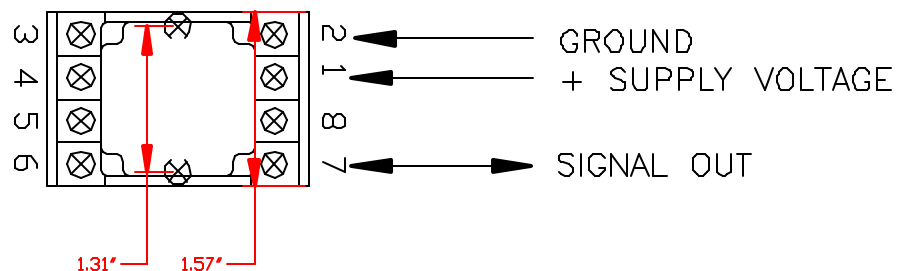
=

CAPM-15 SYSTEM

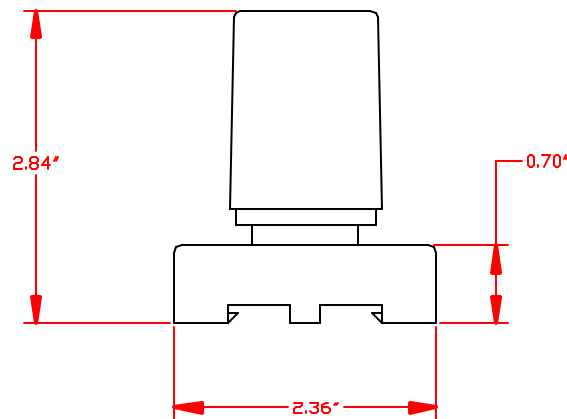
GREEN SHIELD WIRE CAN BE CONNECTED TO TERMINAL 4 WITH THE BLACK WIRE, OR DIRECTLY TO AN EARTH GROUND



SUPPLY VOLTAGE: 10-30 VDC
 SUPPLY CURRENT: ~9mA @ 15V, MAX 18mA
 SIGNAL HIGH: ~13V PEAK @ 15V SUPPLY
 SIGNAL LOW: ~0V
 DUTY CYCLE: ~50%
 MINIMUM FREQUENCY: 0.5 Hz
 LOAD: >3 Kohm



CAPM-15 AMPLIFIER



THIS PRINT, INCLUDING THE INFORMATION CONTAINED IN IT, IS THE PROPERTY OF AW COMPANY. IT IS CONSIDERED PROPRIETARY IN NATURE AND MAY NOT BE USED OR DISCLOSED OUTSIDE OF AW COMPANY, EXCEPT UNDER PRIOR WRITTEN AGREEMENT. ANY MODIFICATIONS MADE TO OR COMMENTS WRITTEN ON THIS DRAWING BY UNAUTHORIZED PERSONNEL WILL VOID THIS DRAWING.



TITLE: CAPM-15 SYSTEM			PART NUMBER: —
DRAWING NUMBER: CP15400A		DATE: 03-01-02	
REV: A	DRAWN BY: SHANE WILSON	CHECKED BY: C.H.	
PAGE 1 OF 1		SCALE: NONE	