

JVC-12 PEEK Positive Displacement Gear Flow Meter

Common Uses

Harsh chemical environments call for special products. That's why AW-Lake developed this flow meter specifically designed for the chemical dispensing industry. Moulded from tough PEEK material and made to provide years of service, these flow meters stand up to the strongest chemicals, including acids, caustic-based fluids and corrosives. Applications include:

- Low flow monitoring
- Chemical batching
- Proportional chemical injection
- Fertilizer injection



Technical Specifications

Flow Range	0.005 to 0.8 gpm 0.02 to 3.0 lpm
Measuring Accuracy	±2.0% (viscosity and turndown range dependent) High accuracy options available.
Repeatability	±0.2%
Viscosity	1 cSt to 500 cSt
Operating Pressure	up to 500 psi 34.5 bar
Ports	1/4" NPT female (contact factory for other options)
Outputs	Standard: Sinking Frequency Optional: EDGE Electronics offer Modbus, 4-20mA, Voltage out, and Bluetooth

Meter Data

Model	Flow Range		Resolution		Filtration*
	(GPM)	(LPM)	(Impulses/Gal)	(Impulses/CC)	(microns)
JVC-12	0.005-0.8	0.02-3.0	53,000	14	30

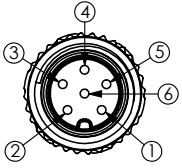
**Clean fluids recommended. Particles will reduce meter life.*

Materials of Construction

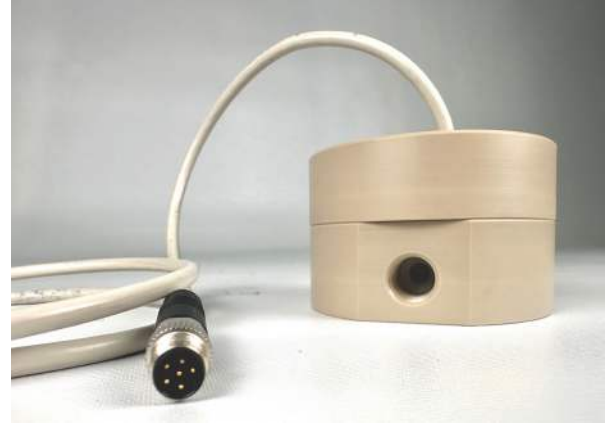
Body	PEEK
Gears	PEEK (20% PTFE filler)
Seals	FFKM
Shaft	Ceramic (99.5% Al ₂ O ₃)

JVC-12 PEEK Positive Displacement Gear Flow Meter

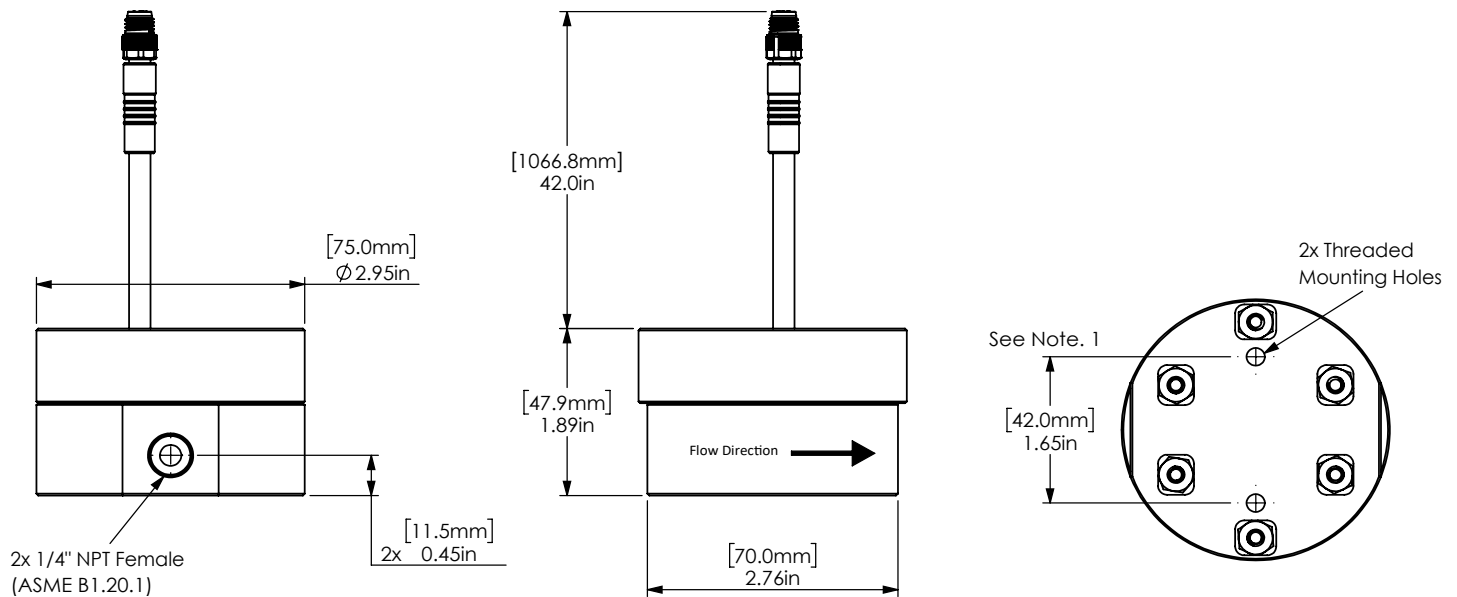
Cable Pinout



M8 Female Connector, 6 Contacts	
PIN #	DESCRIPTION
1	Power, 3.5V DC - 24V DC
2	Ground
3	Flow Signal (Frequency Out)
4	N/C
5	Flow Direction (High/Low)
6	N/C



Meter Dimensions



3D STEP Models are available upon request of factory.
 Products may be subject to change without notice. Contact factory for the most up-to-date product information.